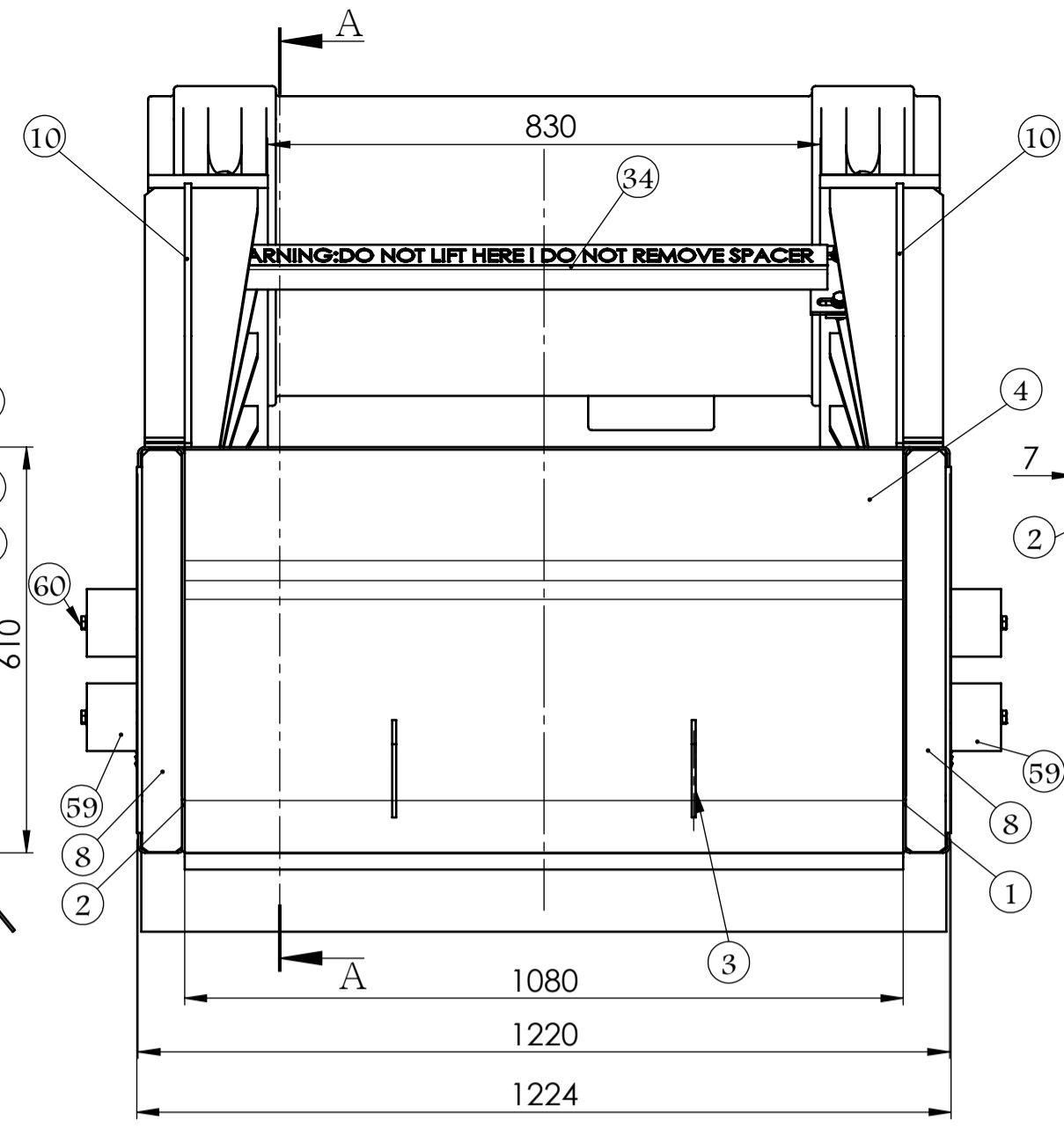
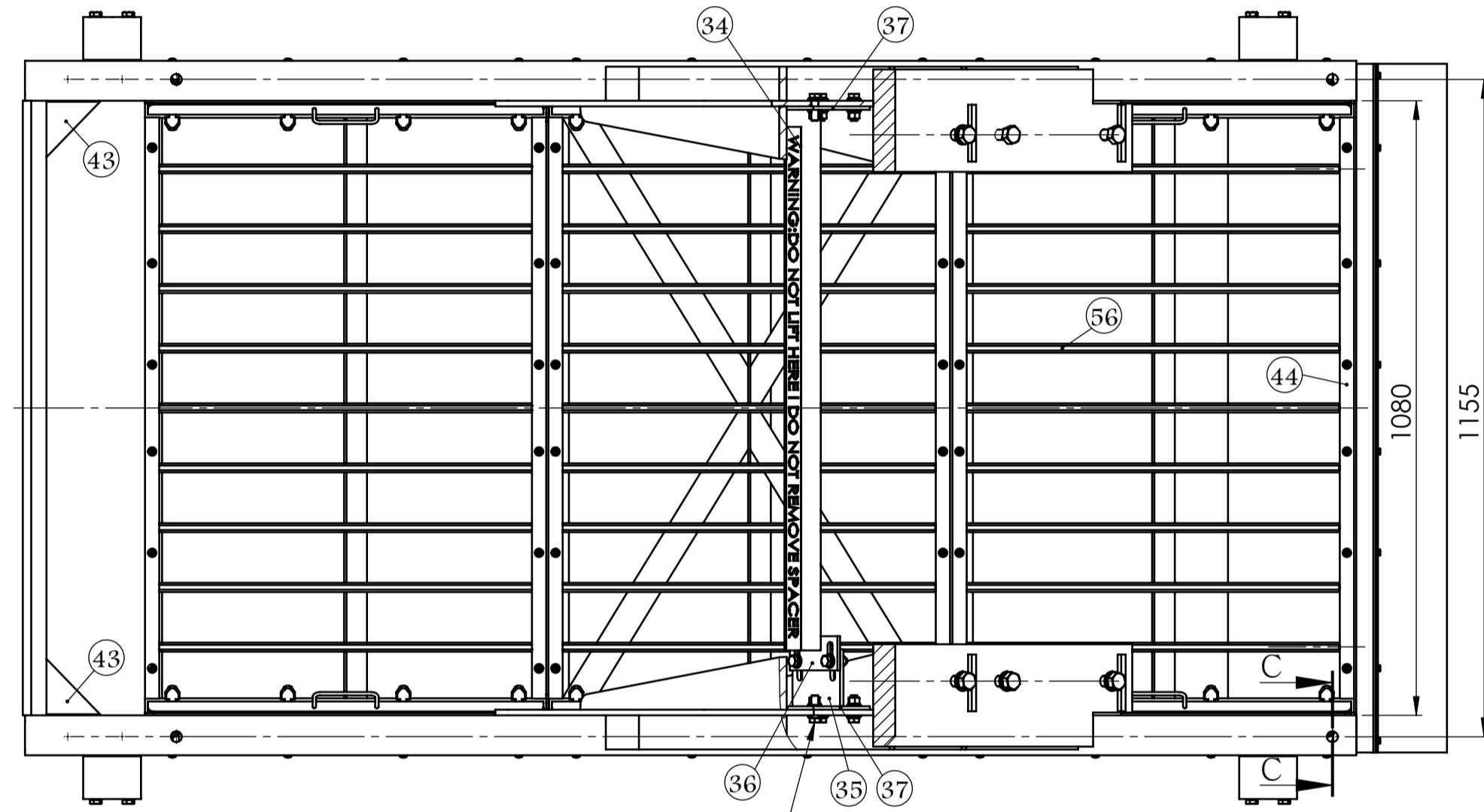
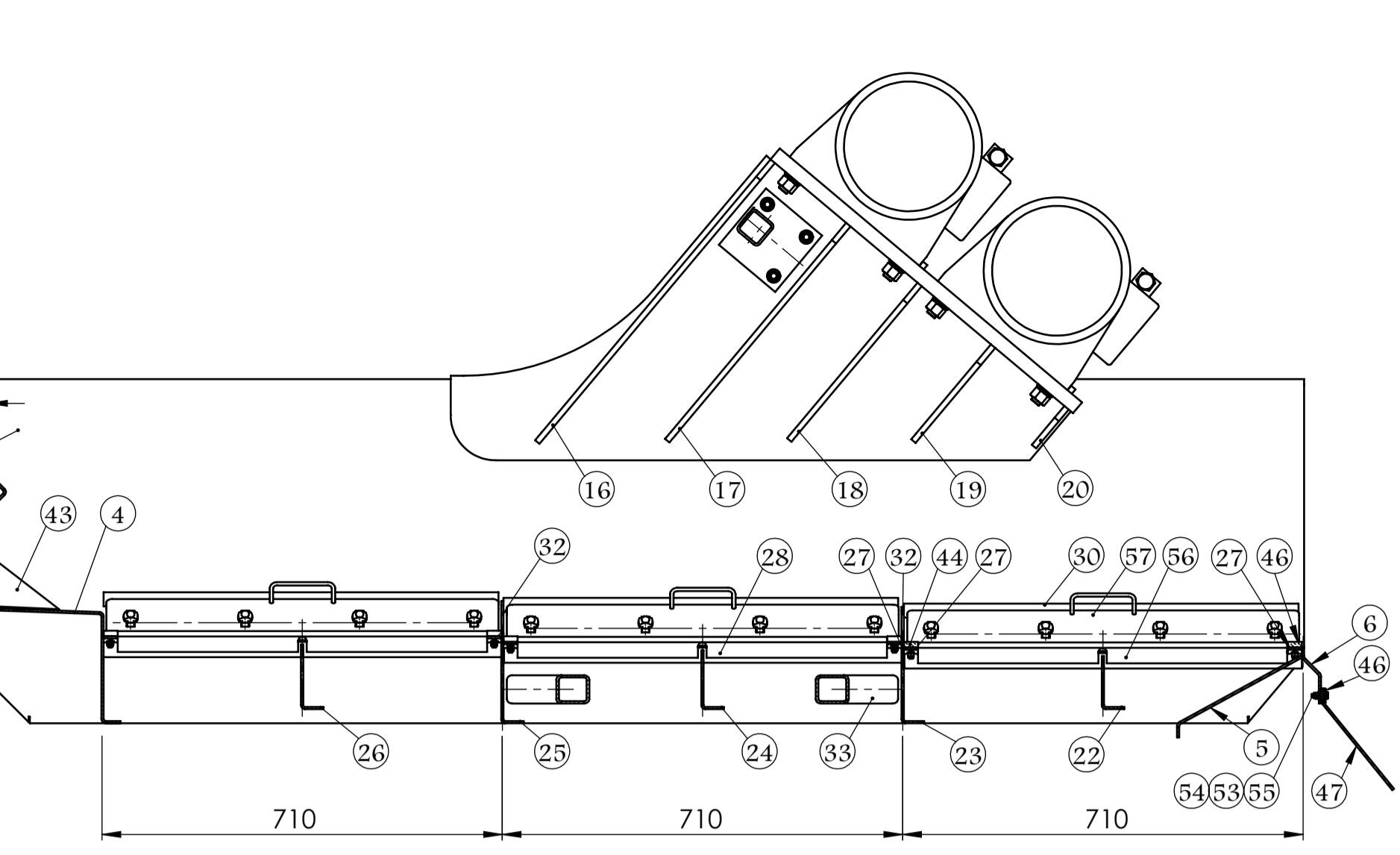


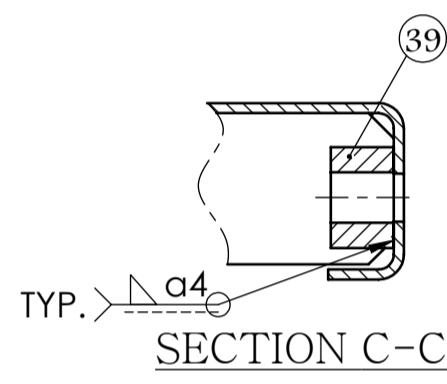
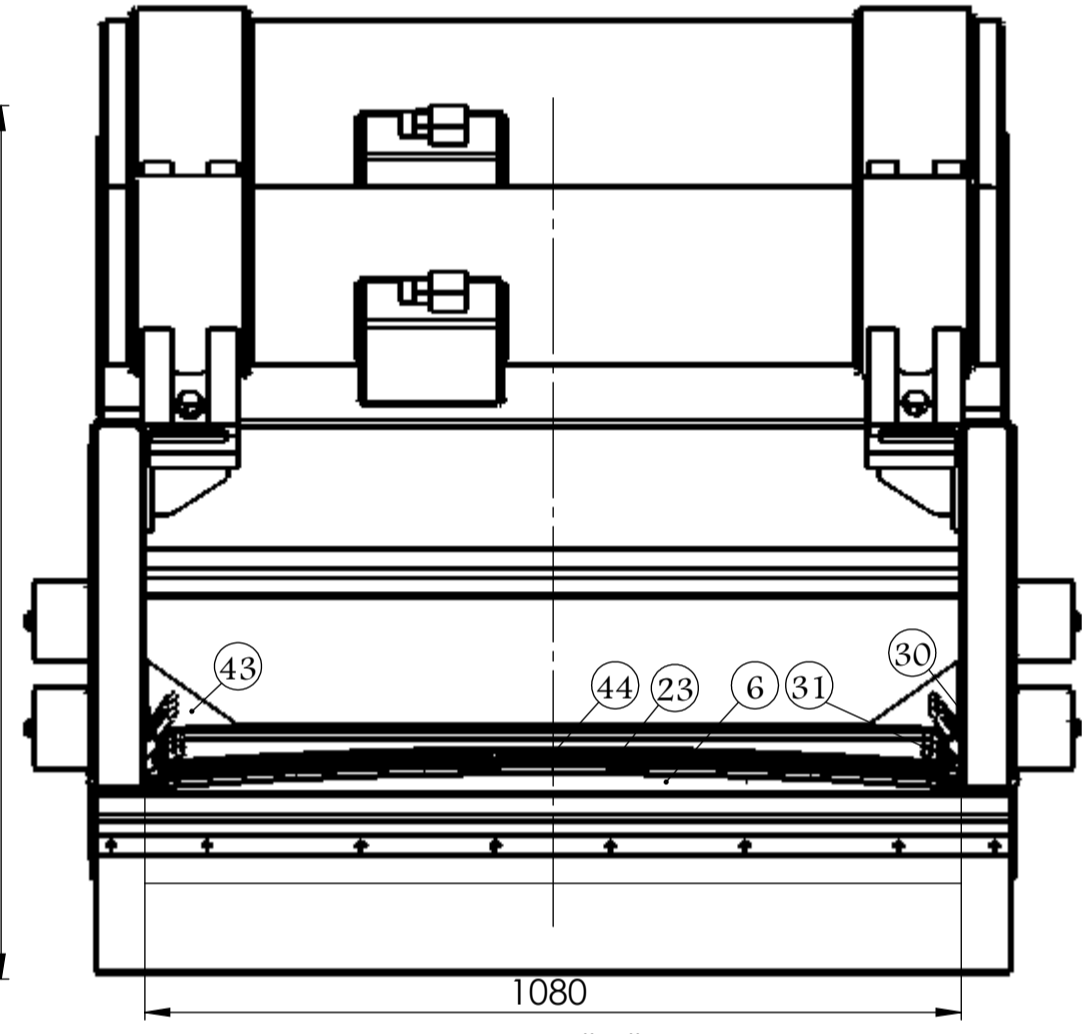
ASSEMBLY



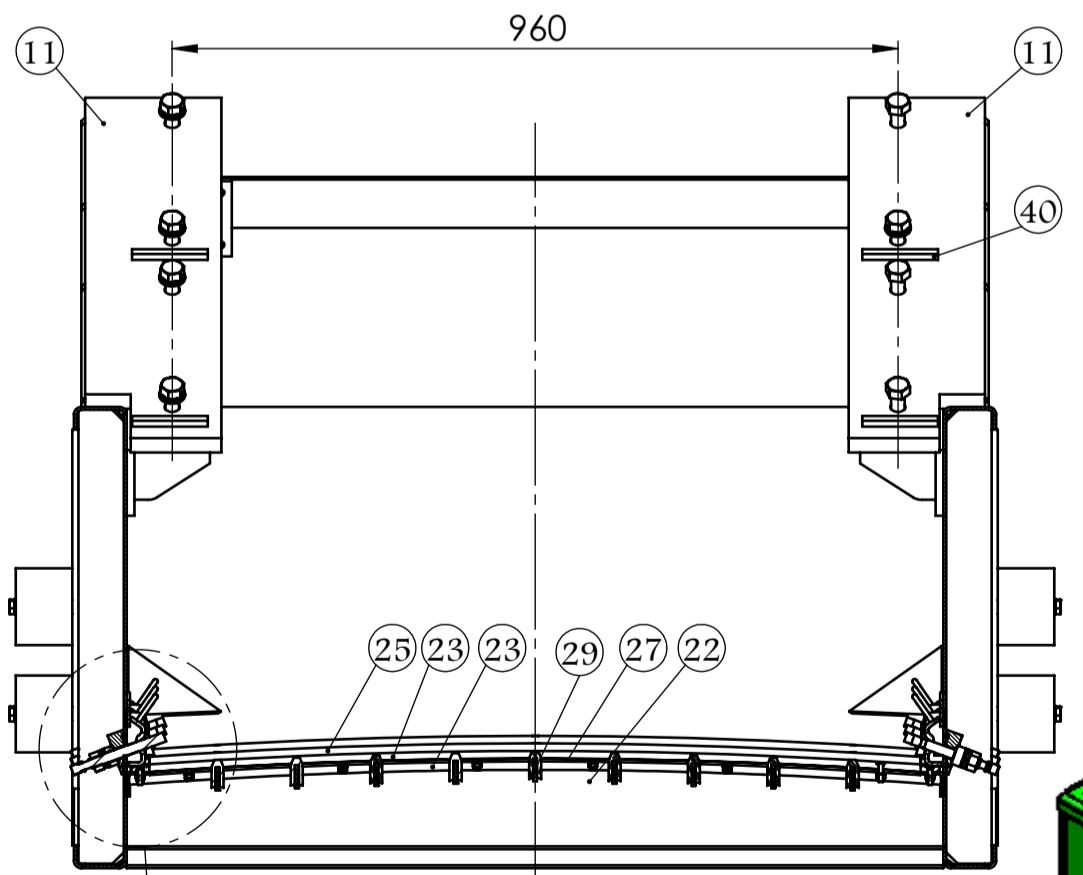
SECTION A-A



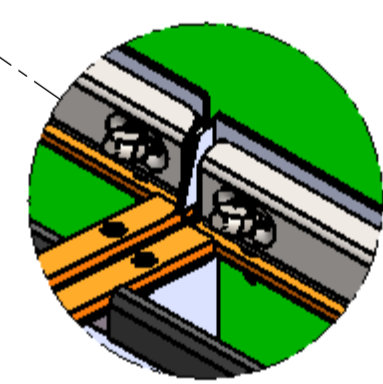
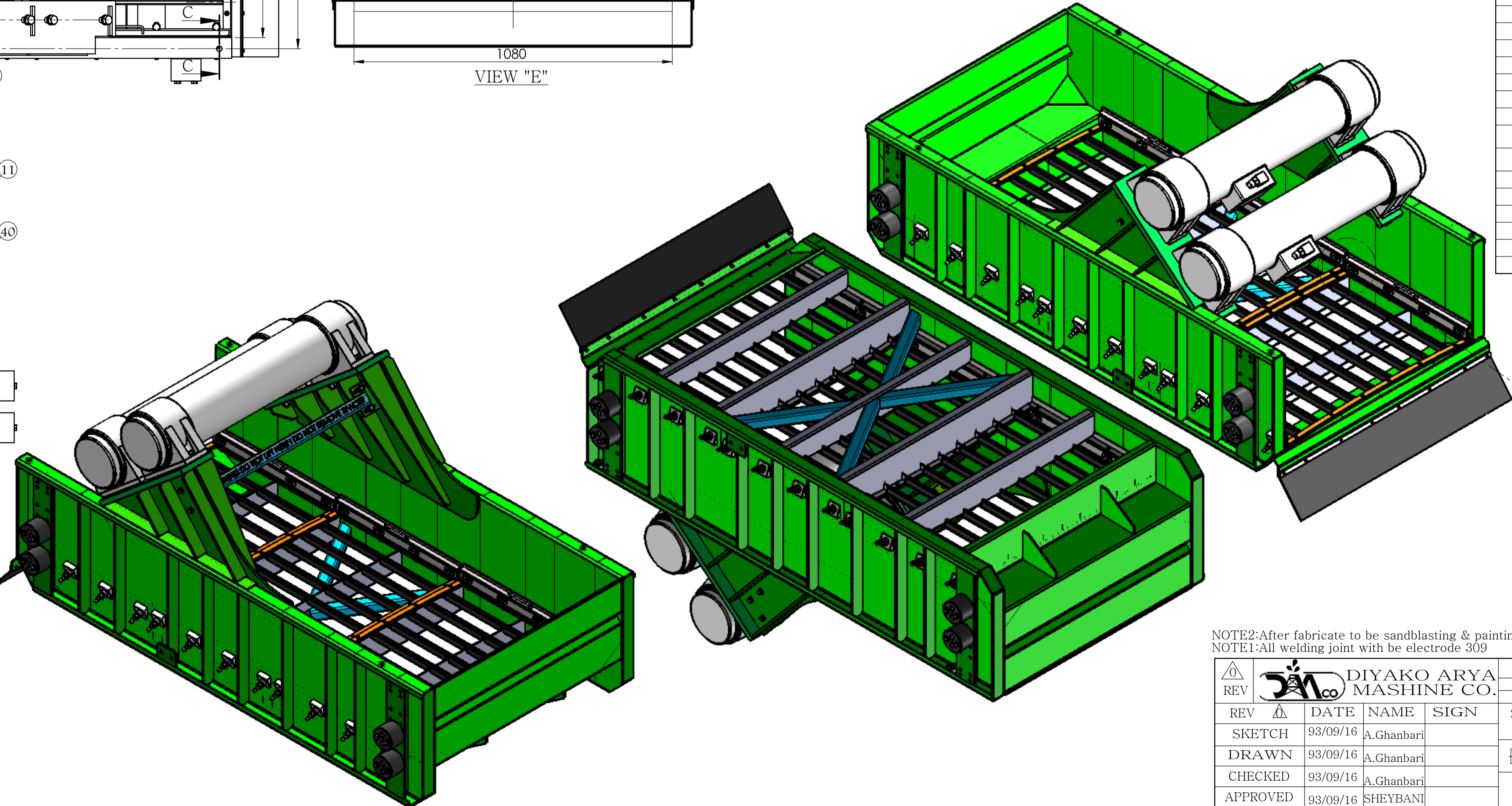
VIEW "E"



SECTION C-C



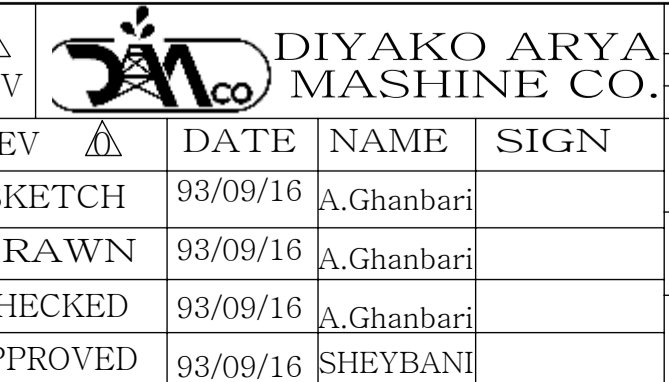
SECTION B-B



ITEM NO.	PART NAME	QTY.	DESCRIPTION	MATERIAL	SURE.H
1	BODY PLATE	1	PL.2340x780x4	St 37	120 HB
2	BODY PLATE	1	PL.2340x780x4	St 37	120 HB
3	SUPPORT PLATE	2	PL.190x147x6	AISI 304	185 HB
4	END PLATE	1	PL.1080x865x4	AISI 304	185 HB
5	PLATE	1	PL.1080x273x4	AISI 304	185 HB
6	PLATE	1	PL.1210x122x4	AISI 304	185 HB
7	REINFORCER PLATE	2	PL.60x640x6	St 37	120 HB
8	REINFORCER PLATE	2	PL.60x635x6	St 37	120 HB
9	REINFORCER PLATE	20	PL.60x600x6	St 37	120 HB
10	PLATE	2	PL.1100x540x10	St 37	120 HB
11	BASE PLATE	2	PL.700x180x25	St 37	120 HB
12	REINFORCER PLATE	2	PL.60x830x6	St 37	120 HB
13	REINFORCER PLATE	2	PL.60x490x6	St 37	120 HB
14	REINFORCER PLATE	2	PL.60x340x6	St 37	120 HB
15	REINFORCER PLATE	2	PL.60x200x6	St 37	120 HB
16	SUPPORT PLATE	2	PL.100x650x10	St 37	120 HB
17	SUPPORT PLATE	2	PL.100x500x10	St 37	120 HB
18	SUPPORT PLATE	2	PL.100x360x10	St 37	120 HB
19	SUPPORT PLATE	2	PL.100x220x10	St 37	120 HB
20	SUPPORT PLATE	2	PL.100x90x10	St 37	120 HB
21	BASE PLATE	4	PL.100x550x8	St 37	120 HB
22	PLATE	1	PL.1080x139x4	AISI 304	185 HB
23	PLATE	1	PL.1080x189x4	AISI 304	185 HB
24	PLATE	1	PL.1080x149x4	AISI 304	185 HB
25	PLATE	1	PL.1080x199x4	AISI 304	185 HB
26	PLATE	1	PL.1080x159x4	AISI 304	185 HB
27	SEAT PLATE	6	PL.1020.6x25x4	AISI 304	185 HB
28	ANGLE AIRON	6	L30x705	AISI 304	185 HB
29	PLATE	27	PL.705x30x4	AISI 304	185 HB
30	PLATE	6	PL.700x25x4	AISI 304	185 HB
31	KEY	15	12x12x20	AISI 304	185 HB
32	PLATE	4	PL.36.3x70x4	AISI 304	185 HB
33	SQ. TUBE	4	50x50x4 L=640	AISI 304	185 HB
34	SQ. TUBE	1	50x50x4 L=950	St 37	120 HB
35	RETAINER PLATE	1	PL.130x100x8	St 37	120 HB
36	FLANG PLATE	1	PL.130x130x6	St 37	120 HB
37	PLATE	2	PL.30x60x6	St 37	120 HB
38	BASE PLATE	2	PL.105x75x6	St 37	120 HB
39	BUSH	4	Ø 20x Ø 40x25	CK 22	160 HB
40	KEY	4	10x10x100	AISI 304	185 HB
41	LOCK	24	60x60x24	AISI 304	185 HB
42	O-RING	24	ID35x4	Std.(NBR)	
43	PLATE	2	AS SHOWN	AISI 304	185 HB
44	CROSS SUPPORT	6	1021.5x25x10	Std.(COMPOSITE)	
45	SIDE SUPPORT	6	705x25x8	Std.(COMPOSITE)	
46	RETAINER PLATE	1	1210x25x3	AISI 304	185 HB
47	RUBBER SHEET	1	1210x334x4	Std.(NBRBY MANJIT)	
48	HEX.BOLT	8	M12 x 40 (C.S)	Std.(St)	
49	WASHER	16	A12	Std.(St)	
50	SPRING WASHER	16	A12	Std.(St)	
51	HEX. NUT	8	M12(C.S)	Std.(St)	
52	CROSS HED SCREW	60	M6x25 (SS)	Std.(St)	
53	SPRING WASHER	64	A6 (SS)	Std.(St)	
54	LOCK NUT	68	M6 (SS)	Std.(St)	
55	HEX.SCREW	8	M6 x 25 (SS)	Std.(St)	
56	SEAT PLATE	27	AS SHOWN	NBR	
57	RETAINER	6	PL.695x102x5	AISI 304	185 HB
58	RAPID CHANGE	24	AS SHOWN	SEE to SHEET	
59	FLOAT MOUNT	8	AS SHOWN	SEE to SHEET	
60	HEX.SCREW	32	1/2"-13 x1" (SS)	Std.(St)	
61	HEX.BOLT	8	3/4"-16-125x40	Std.(St)	
62	WASHER	8	3/4"	Std.(St)	
63	SPRING WASHER	8	3/4"	Std.(St)	
64	LOCK. NUT	8	3/4"-16	Std.(St)	
65	MOTOR	2	TO SPECIFICATION	Std.(St)	

NOTE2:After fabricate to be sandblasting & painting with green color.
NOTE1:All welding joint with be electrode 309

REV	DATE	NAME	SIGN	SCALE	TITLE:
SKETCH	93/09/16	A.Ghanbari		1:10	SHAKER 3PANEL-FLC2000
DRAWN	93/09/16	A.Ghanbari			M.E.S.C NO: 01.68.27.101
CHECKED	93/09/16	A.Ghanbari			PART NO:
APPROVED	93/09/16	SHEYBANI			SHEET: 1 OF 33
					DWG NO: SH-P01.421



BY	DATE	BY	DATE
A.MONJEZI	1397.06.17	SHEIBANI	
REV. CHECKED		REV. APPROVED	