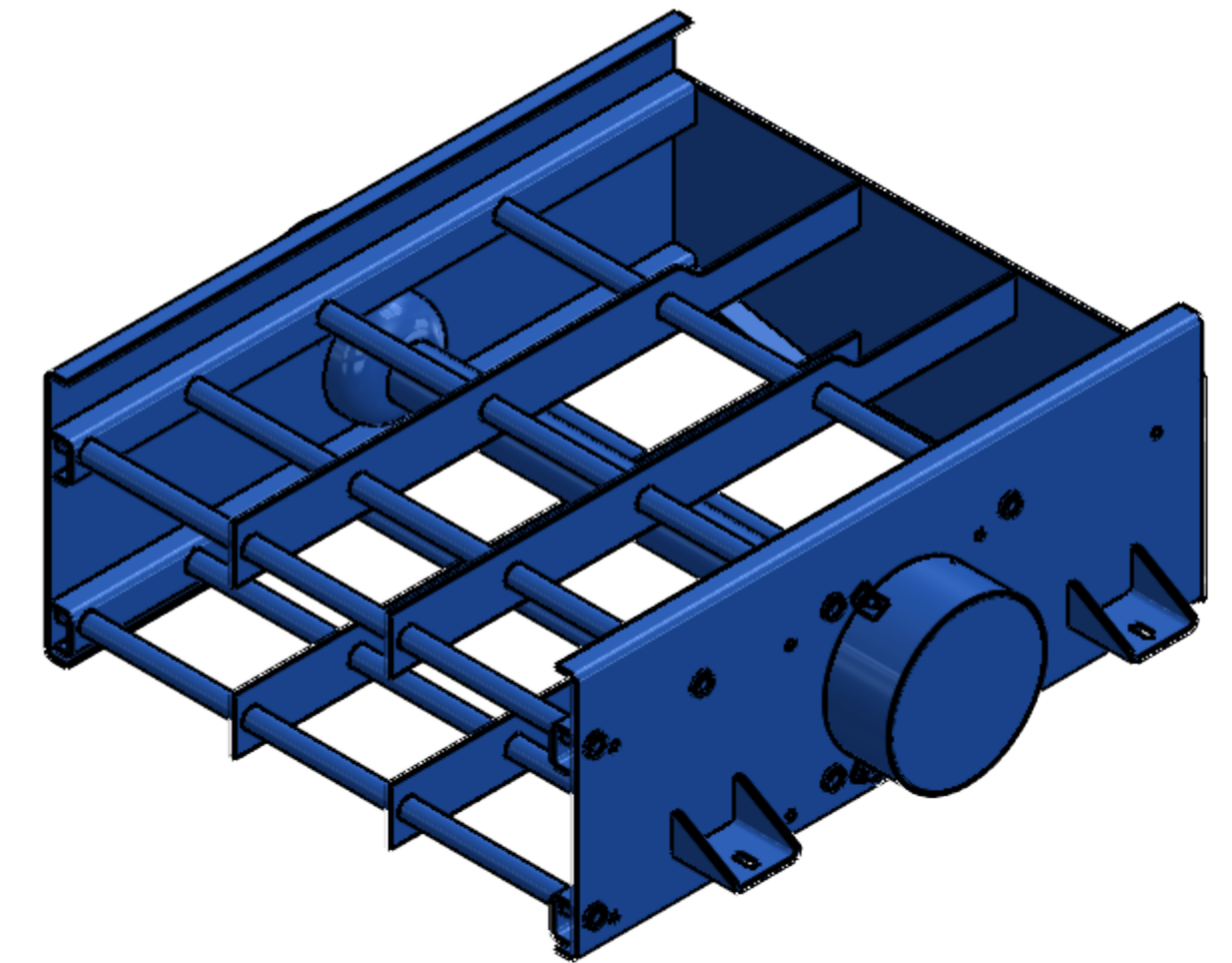


PART NO.	PART NAME	QTY	DIMENSION	MATERIAL	SUR.H	REMARK
1	BODY PLATE	1	AS SHOWN	St 37	120HB	DIN 1.0037
2	BODY PLATE	1	AS SHOWN	St 37	120HB	DIN 1.0037
3	COVER	2	AS SHOWN	St 37	120HB	DIN 1.0037
4	PIPE	1	4"-Sch.40 L=1140mm	Std.		DIN 1.0037
5	PIPE	8	1 1/4"-Sch.160 L=1310mm	Std.		DIN 1.0037
6	PLATE	1	1290x470x8	St 37	120HB	DIN 1.0037
7	PLATE	2	AS SHOWN	St 37	120HB	DIN 1.0037
8	PLATE	2	AS SHOWN	St 37	120HB	DIN 1.0037
9	RETAINING PLATE	2	AS SHOWN	St 37	120HB	DIN 1.0037
10	RETAINING PLATE	2	AS SHOWN	St 37	120HB	DIN 1.0037
11	PLATE	1	AS SHOWN	St 37	120HB	DIN 1.0037
12	SEAT PLATE	4	AS SHOWN	St 37	120HB	DIN 1.0037
13	FLANGE	2	AS SHOWN	St 37	120HB	DIN 1.0037
14	BEARING HOUSING	2	AS SHOWN	GG-25	160 HB	DIN 0.6025
15	SPHERICAL ROLLER BEARIG	2	skf 22312 EC	Std		
16	SHAFT	1	AS SHOWN	AISI 4140	22HRC	DIN 1.7225
17	BEARING HOUSING COVER	2	AS SHOWN	A319	70 HB	
18	LOCK NUT	1	KM 12	Std.		
19	LOCK WASHER	1	MB12	Std.		
20	WASHER	12	A17	Std.(St)		DIN 125
21	SPRING WASHER	12	A16	Std.(St)		DIN 128
22	HEX. HEAD SCREW	12	M16X40	Std.(St)		DIN 4017
23	SEAL	2	57.2X82.5X12.7(TYP. TC)	Std.		
24	WASHER	12	A10	Std.(St)		DIN 125
25	SPRING WASHER	12	A10	Std.(St)		DIN 128
26	HEX. HEAD SCREW	12	3/8"-16x1.5"	Std.(St)		ANSI B.18.2.1
27	SINKER	2	AS SHOWN	GG-25	160 HB	DIN 0.6025
28	KEY	1	AS SHOWN	CK 45	180 HB	DIN 1.1191
29	HEX. HEAD SCREW	8	1/2"-13 UNC L=1.5"	Std.(St)		B.S.1981:195
30	COVER	1	AS SHOWN	St 37	120HB	<sup>3</sup> DIN 1.0037
31	COVER	1	AS SHOWN	St 37	120HB	DIN 1.0037
32	HEX. HEAD NUT	36	1/2"-13 UNC	Std.(St)		AISI B18.2.2-1972
33	NIPPLE	2	AS SHOWN	CK 45	180 HB	DIN 1.1191
34	GREASE FITTING	2	SIZE :1/8"	Std.(St)		DIN 71412
35	HUB	1	AS SHOWN	CK 45	180 HB	DIN 1.1191
36	ECCENTRIC SHAFT SHEAVE	1	AS SHOWN	GG-25	160 HB	DIN 0.6025
37	KEY	1	AS SHOWN	CK 45	180 HB	DIN 1.1191
38	WASHER	3	SIZE :3/8"	Std.(St)		AISI B18.22.M-1981
39	HEX. HEAD SCREW	3	3/8"-16 UNC L=2.5"	Std.(St)		B.S.1981:1953
40	SPRING WASHER	6	SIZE 1/2"	Std.(St)		
41	WASHER	2	AS SHOWN	Std.(St)		



NOTE3 : After fabrication all surfaces should be painted as  
 LAYER NO1: POLYAMIDE ZINC PHOSPHATE EPOXY BROWN COLOR LINK THK 100 MIC  
 LAYER NO2: POLYAMIDE EPOXY GREY COLOR THK 80 MIC  
 LAYER NO3: POLYAMIDE BLUE COLOR THK 70 MIC

NOTE2 : After assembly all out side surfaces painting by BLUE colour.

NOTE1 : All welding by electrode 7018

REV	DATE	NAME	SIGN	SCALE	TITLE:	BY	DATE
SKETCH	1404/05/25	J.Motedayen		1:4	BASKET VIBRATION SHAL SHAKER TANDEM		
DRAWN	1404/05/25	J.Motedayen			M.E.S.C NO: 01.66.08.016		
CHECKED	1404/05/26	J.Motedayen			PART NO:		
APPROVED	1404/05/27	SHEYBANI		A2	SHEET: 1 OF 19		
					DWG NO: SH-P01.164		