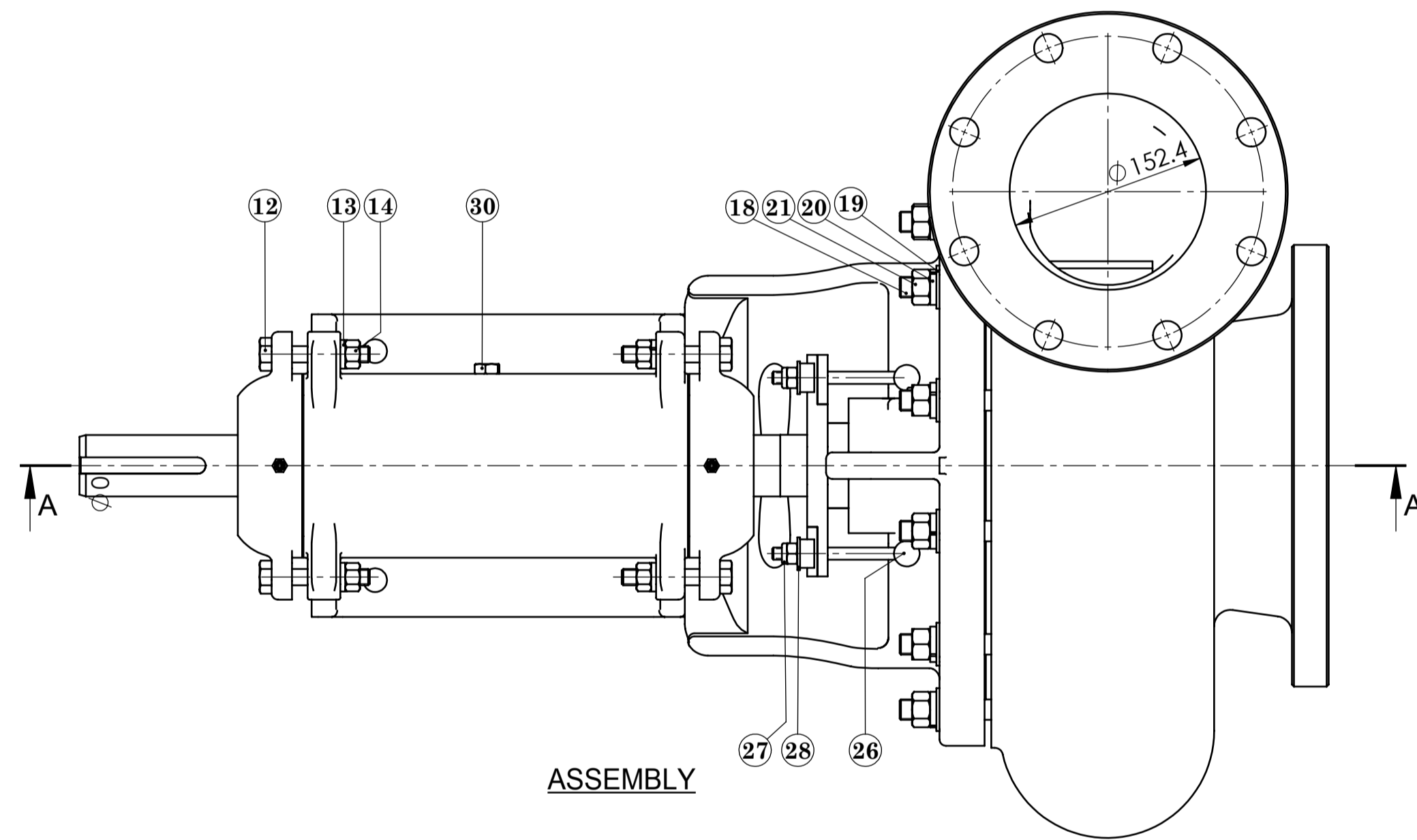
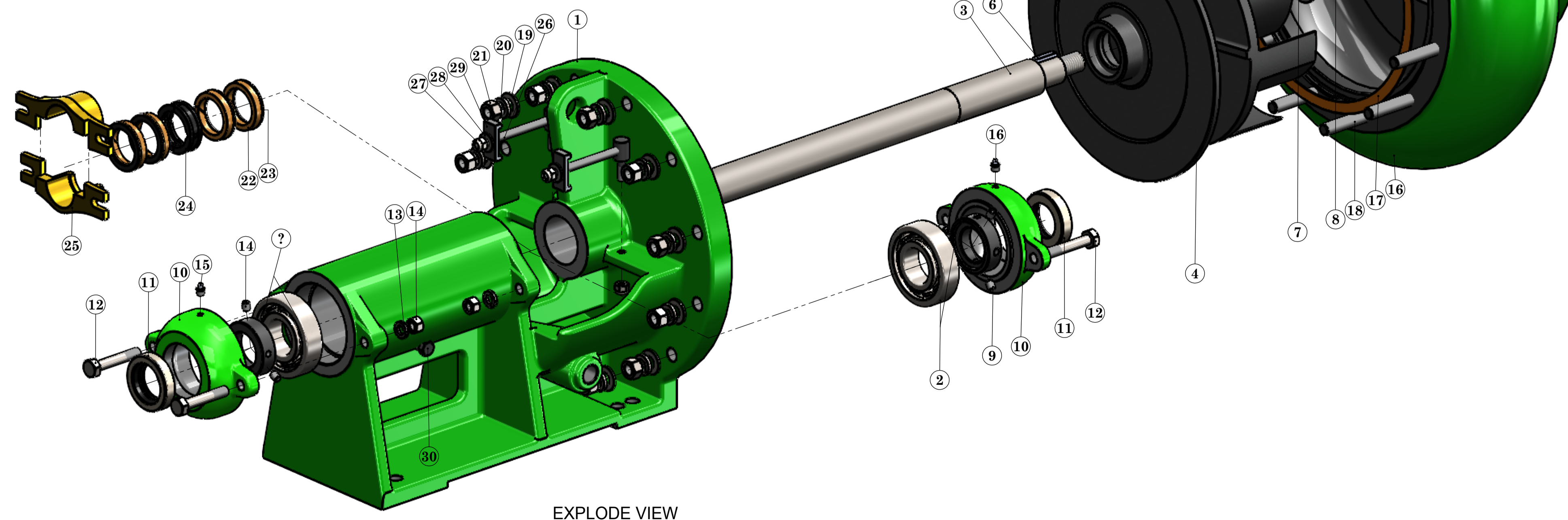


EMSC.	PART NO.	PARTS NAME	QTY	DIMENSION	MATERIAL	SUR.F.	CORE.H	REMARKS
33.50.15.048	1	PUMP BASE	1	AS SHOWN	GG-25	160 HB		DIN 0.6025
	2	BALL BEARING	2	NNA 310-30	Std.(St)			
33.50.20.020	3	SHAFT	1	AS SHOWN	AISI 420	27 HRC		DIN 1.4021
33.50.20.080	4	WEAR PLATE	1	AS SHOWN	GG-25	160 HB		DIN 0.6025
33.50.20.074	5	IMPELLER	1	AS SHOWN	GG-25	160 HB		DIN 0.6025
33.50.20.020	6	IMPELLER KEY	1	AS SHOWN	CK 45	170 HB		DIN 1.0570
33.50.20.020	7	WASHER	1	SIZE:1"	Std.(St)			ANSI B18.22.1-1965
33.50.20.020	8	HEAVY HEX. NUT	2	SIZE:1"-8 UNC	Std.(St)			ANSI B18.2.2-1972
	9	HEX. SOCKET SET SCREW	6	3/8"-16X1/2"	Std.(St)			ANSI B18.3-1982
33.50.15.034	10	CAP BEARING	2	AS SHOWN	GG-25	160 HB		DIN 0.6025
	11	SEAL(TYPE SA2)	2	3"X1 7/8"X1/2"	Std.			
	12	HEX. HEAD BOLT	4	1/2"-13X3"	Std.(St)			ANSI B18.2.1-1981
	13	HELICAL SPRING LOCK WASHER	4	SIZE:1/2"	Std.(St)			ANSI B18.21.1-1981
	14	HEX. HEAD NUT	4	1/2"-13 UNC	Std.(St)			ANSI B18.2.2-1972
	15	GREASE FITTING	3	SIZE:1/8"-28TPI	Std.(St)			DIN 71412
33.50.20.010	16	HOUSING	1	AS SHOWN	GG-25	160 HB		DIN 0.6025
33.50.20.010	17	GASKET	1	AS SHOWN	Std.(VICTORY)			
33.50.20.010	18	STUD BOLT	12	AS SHOWN	Std.(St)			
33.50.20.010	19	WASHER	12	SIZE:5/8"	Std.(St)			ANSI B18.22.1-1965
33.50.20.010	20	HELICAL SPRING LOCK WASHER	12	SIZE:5/8"	Std.(St)			
33.50.20.010	21	HEX. HEAD NUT	12	5/8"-11 UNC	Std.(St)			ANSI B18.2.2-1972
33.50.15.050	22	PACKING	4	AS SHOWN	Std.(PU)	90 Shore A		
33.50.15.050	23	PACKING	4	AS SHOWN	Std.(NBR)	90 Shore A		
33.50.15.050	24	HALF GREASE HOSEING	2	AS SHOWN	PE	90 Shore A		
33.50.15.327/341	25	HALF GELAND	2	AS SHOWN	UNS NO.C94300	85 HB		
33.50.16.028	26	FIX SCREW	2	AS SHOWN	St 52	170 HB		DIN 1.0570
	27	LOCK NUT	4	3/8"-16 UNC	Std.(St)			
	28	WASHER	2	SIZE:3/8"	Std.(St)			ANSI B18.22.1-1965
	29	GELAND CLAMP	2	AS SHOWN	St 52	170 HB		DIN 1.0570
	30	HEX HEAD PLUG	1	SIZE:G1/4"-19 TPI	Std.(St)			ASME B16.11-2001
33.50.20.020	31	KEY	1	AS SHOWN	CK 45	180 HB		DIN 1.0570

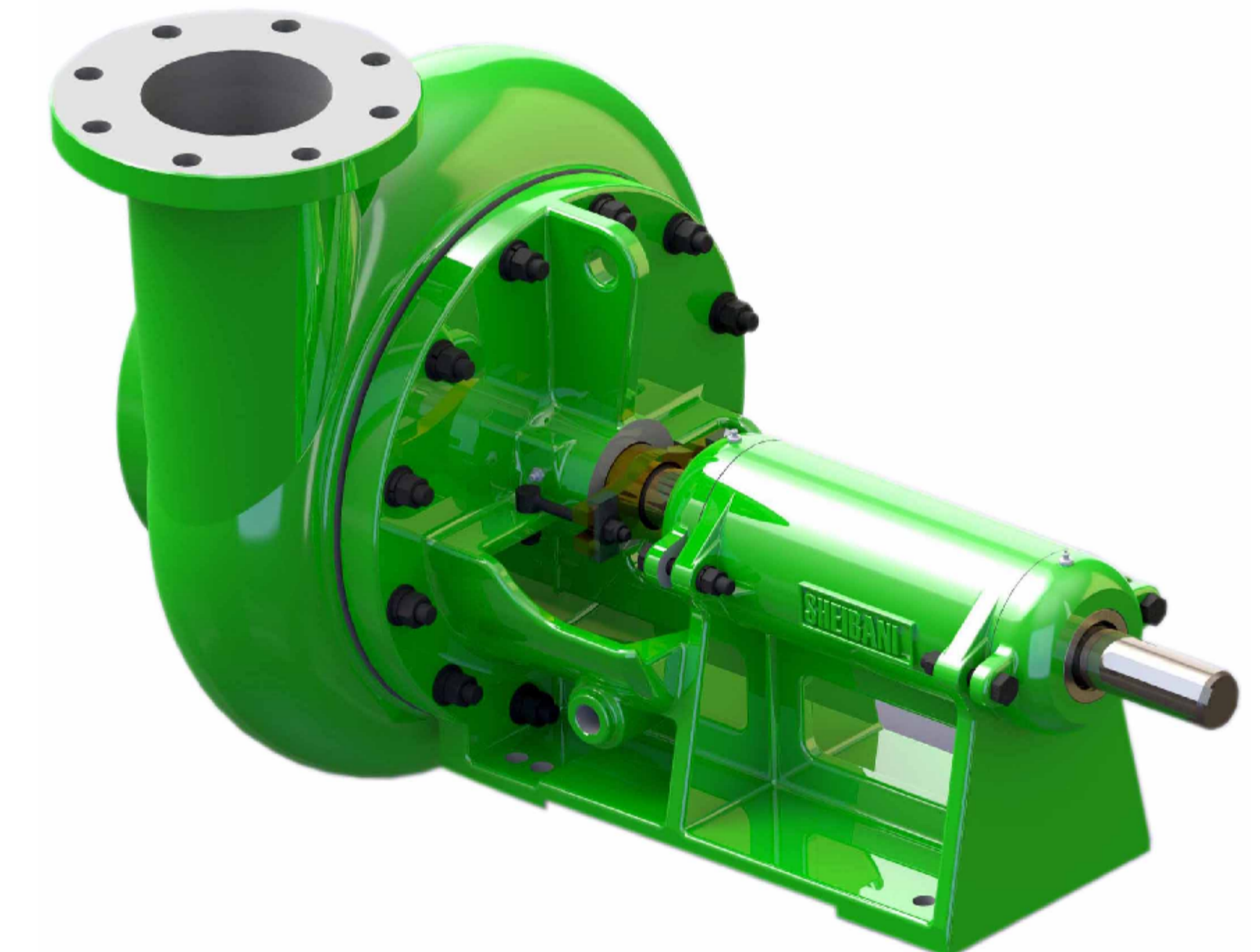
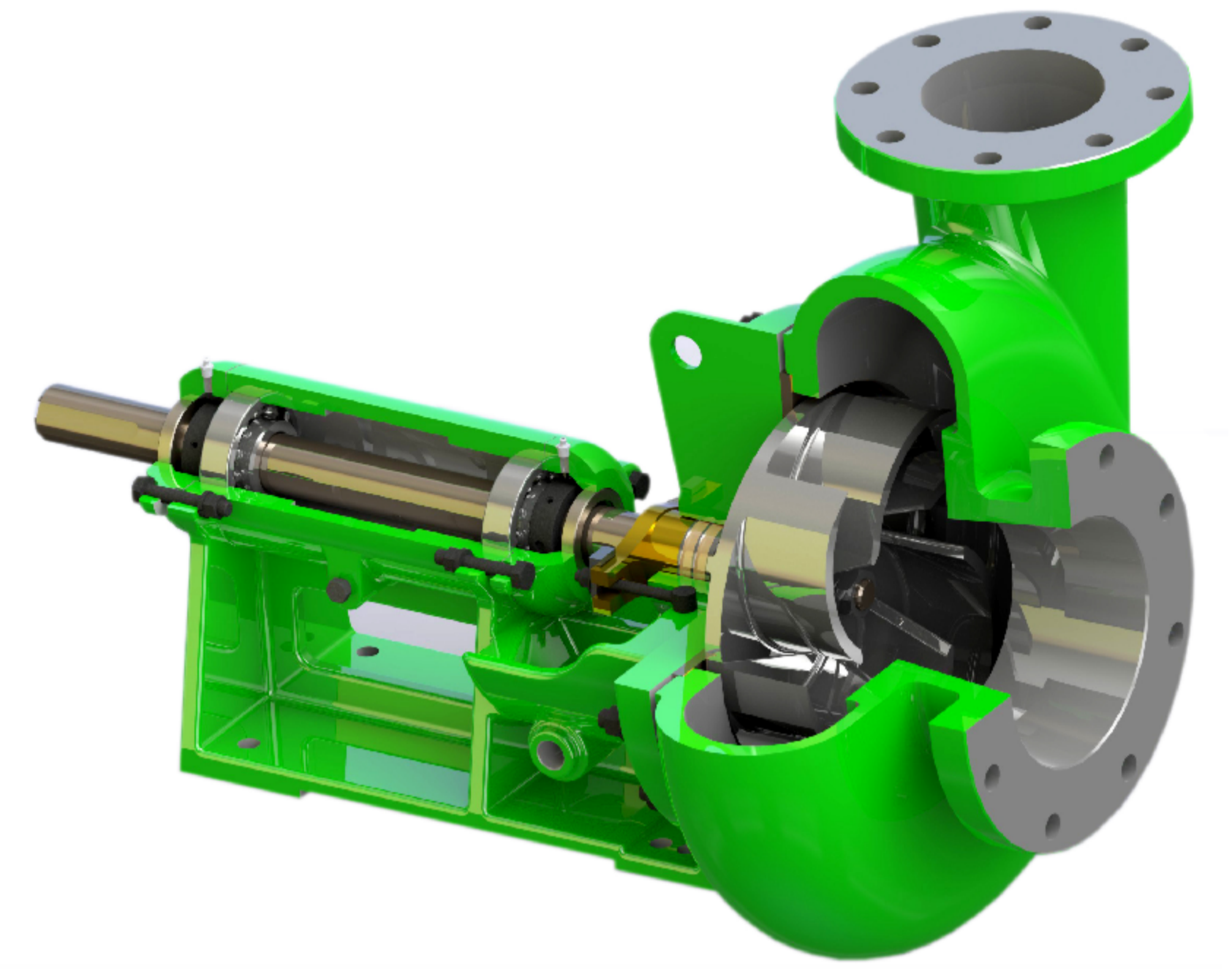
SECTION A-A



ASSEMBLY



EXPLODE VIEW



NOTE : After assembly all out side painting by green colour.

REV	DATE	NAME	SIGN	BY	DATE	BY	DATE
SKETCH	404/07/20	J.Motedayen		REV. CHECKED		REV. APPROVED	
DRAWN	404/07/20	J.Motedayen		TITLE: ONE STAGE CENTRIFUGAL PUMP 6X8			
CHECKED	404/07/22	J.Motedayen		M.E.S.C NO: PART NO:			
APPROVED	404/07/24	SHEYBANI		SHEET: 1 OF 15			
				SCALE 1:5	SIZE **** A1		
				SWG NO: SH-P01.129			