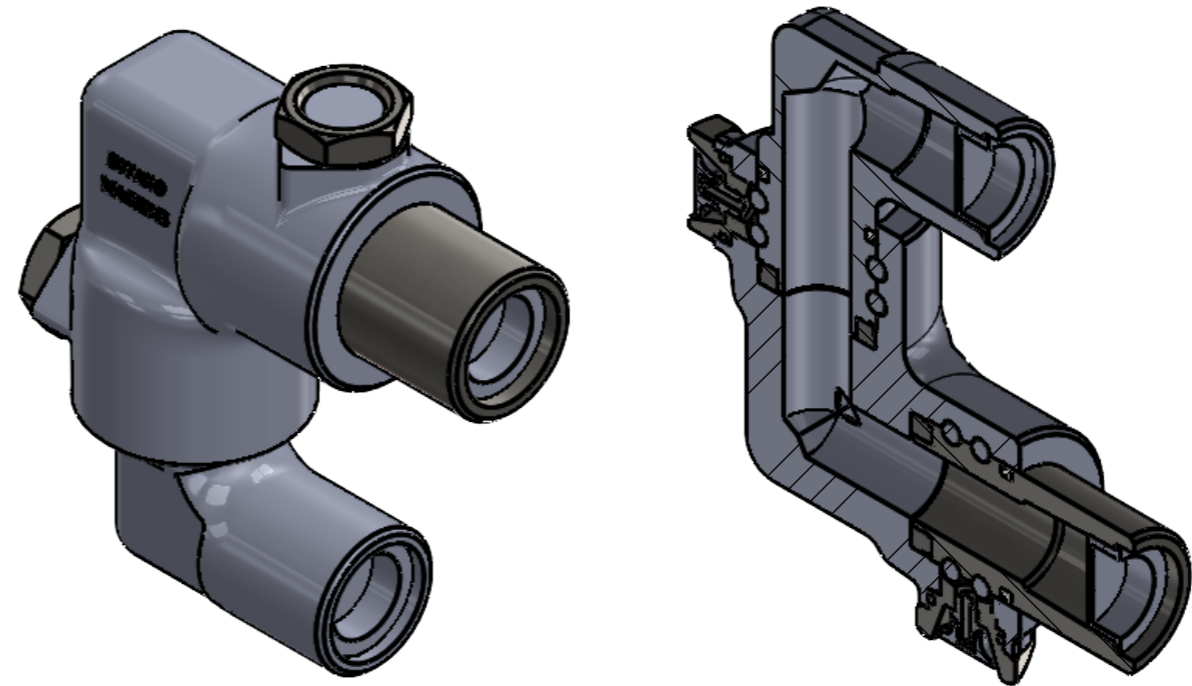


ITEM	PART NUMBER	DESCRIPTION	QTY.	Material	SUR.H	COR.H	Weight	REMARKS
1	BODY	AS SHOWN	1	AISI 4140	22 HRC	---	22 kg	FORGED
2	BALL	Ø6.35	88	STD	STD	----	----	PURCHASING
3	NIPPLE	AS SHOWN	1	AISI 4140	22 HRC		0.5 kg	FORGED
4	ELBOW	AS SHOWN	1	AISI 4140	22HRC	-----	0.5 kg	FORGED
5	DUST SEAL	AS SHOWN	2	NBR	75 SH.A	----	2 gr	----
6	NUT	AS SHOWN	2	AISI4140	22 HRC	----	70 gr	
7	I SEAL	AS SHOWN	2	NBR / BRASS	75 SH.A	----	----	----
8	CAP (PLASTIC)	AS SHOWN	2	PLASTIC	85 SH.A	----	----	----
9	O-RING	ID=23 d=6.35	2	NBR	70 SH.A	----	----	----
10	GREASE FITING	1/8 in	2	STD	----	----	----	----
11	CAP (NBR)	AS SHOWN	2	NBR	75 SH.A	----	----	----



NOTE4 : PART 1,3,4&7 SHOULD BE COLORED WITH SILVER AFTER FABRICATION  
 NOTE 3:WORK PRESS =6000 PSI TEST PRESS=9000 PSI  
 NOTE2:Remove All sharp Edges.  
 NOTE1:Unspecified tolerances is according to ISO 2768M.

		<b>DIYAKO ARYA MACHINE CO.</b>		BY	DATE	BY	DATE
REV	0/△	DATE	NAME	SIGN	REV.	CHECKED	REV.APPROVED
SKETCH	1404/02/10	J.Motedayen			SCALE	<b>TITLE: SWIVEL JOINT 1" STYLE 50</b>	
DRAWN	1404/02/10	J.Motedayen			1:1	<b>M.E.S.C NO:</b>	
CHECKED	1404/02/10	J.Motedayen			SIZE	<b>PART NO:</b>	
APPROVED	1404/02/10	MR.SHEBANI			A3	<b>SHEET:</b>	
						<b>DWG NO:</b>	
						<b>1 OF 7</b>	
						<b>SH-P01.267</b>	